



**2014**  
**企业社会责任报告书**  
Corporate Social Responsibility Report



2012 ( )

2010-

2013

Scientific Industrial de México, S. A.de C. V.

Universal

2014 ( 2014 1 1 2014 12 31 )  
(Global Reporting Initiative, GRI) G4

SGS Taiwan Ltd. GRI G4 AA1000 AS: 2008

2015 7

2014 7

2016 7

/

1558

+86-21-5896-8418

public@usish.com

www.usish.com

+86-21-5896-8415

---

351 141

+886-49-235-0876

csr@ms.usi.com.tw

www.usish.com

+886-49-239-3571

• 500

•

• Diamond Award

• 2014 500

• 2014

•

•

•



• Diamond Award

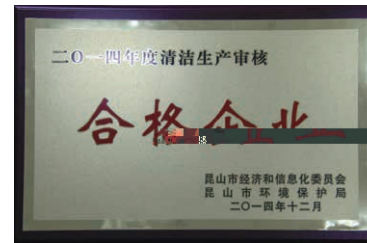


• 2014 500



• 2014

•



•

2014



2014 DMS(Design, Manufacturing, Services)  
D(MS)<sup>2</sup> (Design, Manufacturing, Miniaturized, Services, Solutions)

$$\frac{2014 + 2015 + 2.18}{17} =$$

2014 84%  
88%

SAW 13,533 2014 7

RoHS REACH RoHS

李 勇

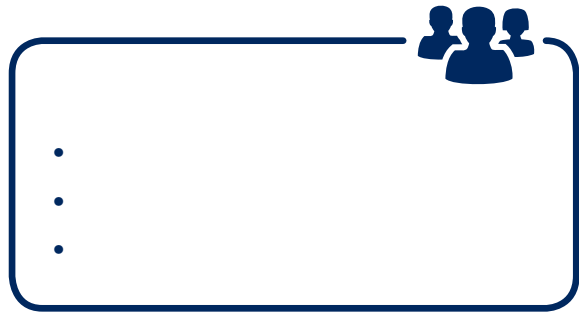
2014 300  
0 EICC







01



CSR

( 16 )

( )

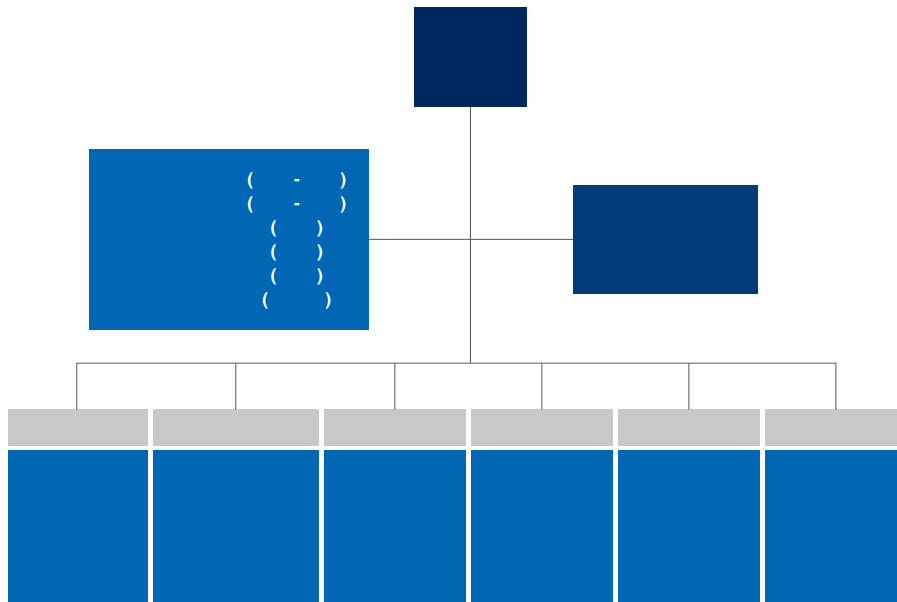


# CSR

Global Reporting Initiative(GRI)  
G4

CSR

GRI  
CSR

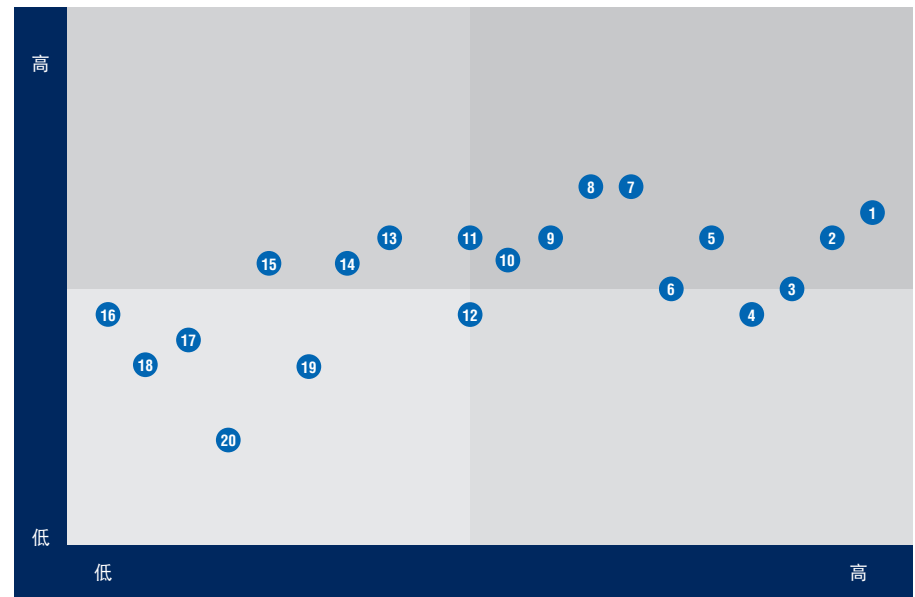


1.

/

/NGO

2.



- 1
- 2
- 3
- 4
- 5






- 6
- 7
- 8
- 9
- 10

- 11
- 12
- 13
- 14
- 15

- 16
- 17
- 18
- 19
- 20



3.

	• •	• •	• •		
	• •	• • • •	/	• • •	University
	• • •	• EICC-ON • •		• EICC-ON •	EICC
	• •	•	/ E-mail	•	
	• •	• QBR • • • •	PSL	• •	EICC





		-	-	-		-			
	●	●	●	○	○	●		○	
	●	●	●	●	●	●		○	●
	●	●	●	●	●	●			
	●	●	●	●	○	○		○	●
	●	●	●	●	●	●		○	●
	●	●	●	●	●	●		○	●
	●	●	●	●	●	●		○	●
	●	●	●	●	○	○			
( )	●	●	●	●	●	●		○	●
	●	●	●	●	●	●	●	○	●
	●	●	●	●	●	●			
	●	●	●	●	●	●			
	●	●	●	●	●	●			
	●	●	●	●	●	●		○	●
	●	●	●	●	●	●		○	
	●	●	●	●	●	●		○	●
	●	●	●	●	●	●		○	●



		-	-	-		-			
	●	●	●	●	●	●	○	●	
	●	●	●	●	●	●	○	●	
	●	●	●	●	●	●	○	●	
	●	●	●	●	●	●	○	●	
	●	●	●	●	●	●	○	●	
	●	●	●	●	●	●	○	●	
	●	●	●	●	●	●	○	●	
	●	●	●	●	●	●	○	●	
	●	●	●	●	○	○	○		
	●	●	●	●	●	●	○	●	
	●	●	●	●	●	●	○	●	
( )	●	●	●	●	●	●	○	●	
	●	●	●	●	●	●	○	●	
	●	●	●	●	●	●	○	●	
	●	●	●	●	●	●	○	●	
	●	●	●	●	●	●	○	●	
	●	●	●	●	●	●	○	●	
	●	●	●	●	●	●	○	●	



## EICC

2012 EICC (Electronic Industry Citizenship Coalition) EICC-ON  
 EICC ( )  
 EICC-ON (SAQ)

Low Risk 2014 EICC  
 Low Risk

ISO14001 ISO9001 OHSAS18001



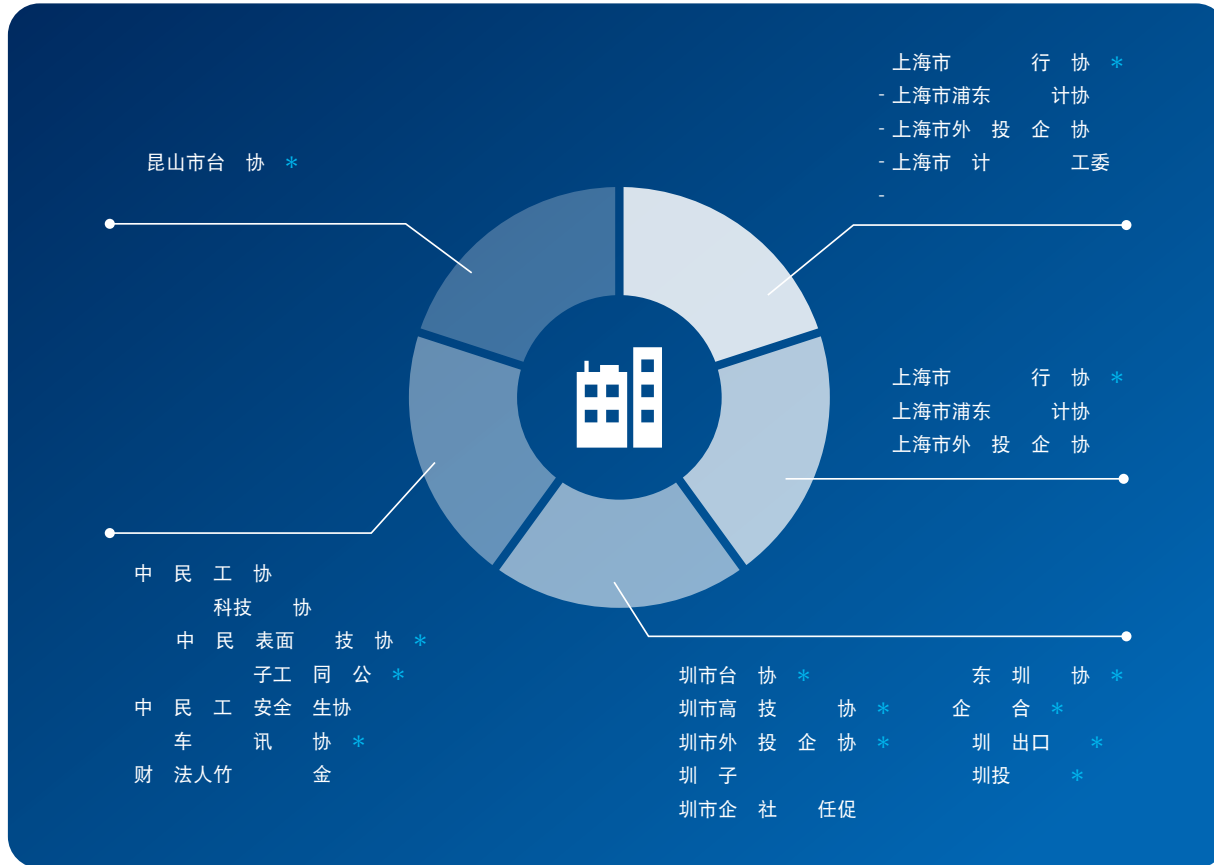
2014

2014 -

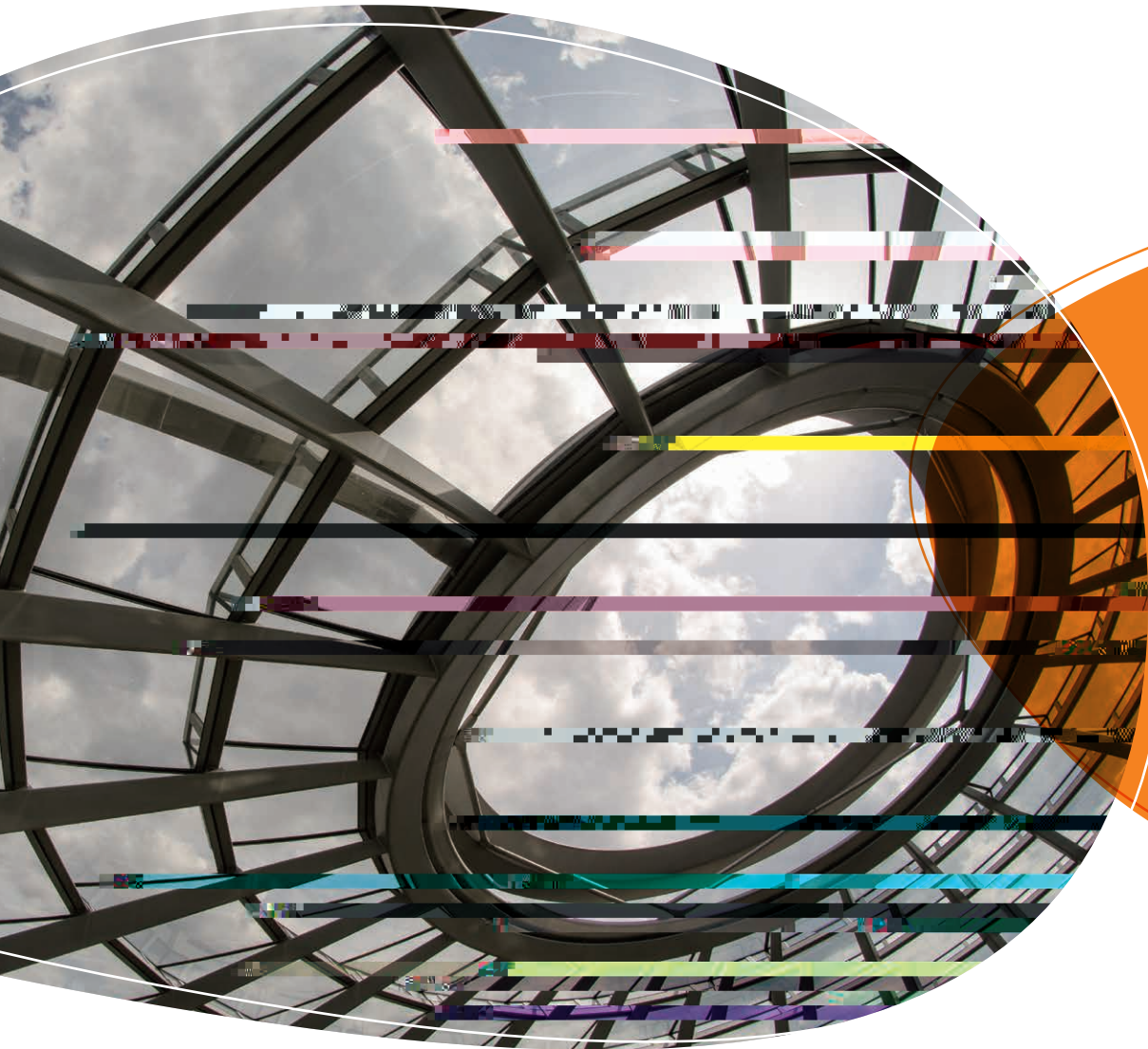


2014 -





\* /



02







**158.73**

2013 158.73  
11.22%



**7.01**

2013 7.01  
24.31%



2014 158.73 2013 11.22% 7.01 2013 24.31%  
245,950 158.73 60.07 63.26

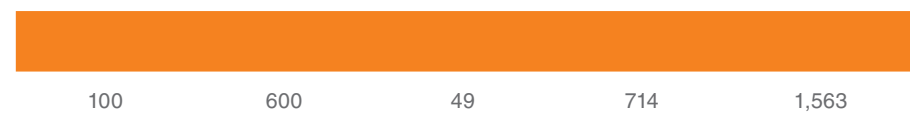
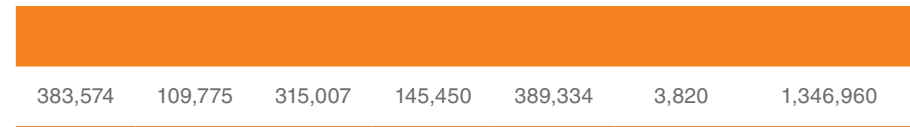
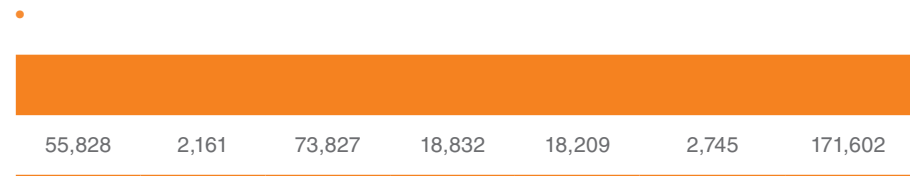
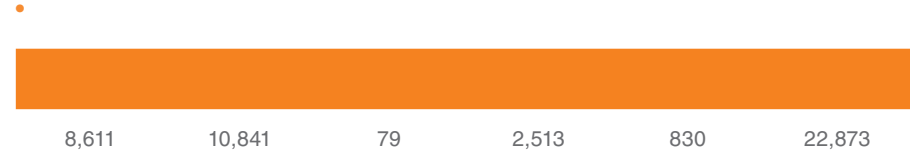
**158.73**

158.73



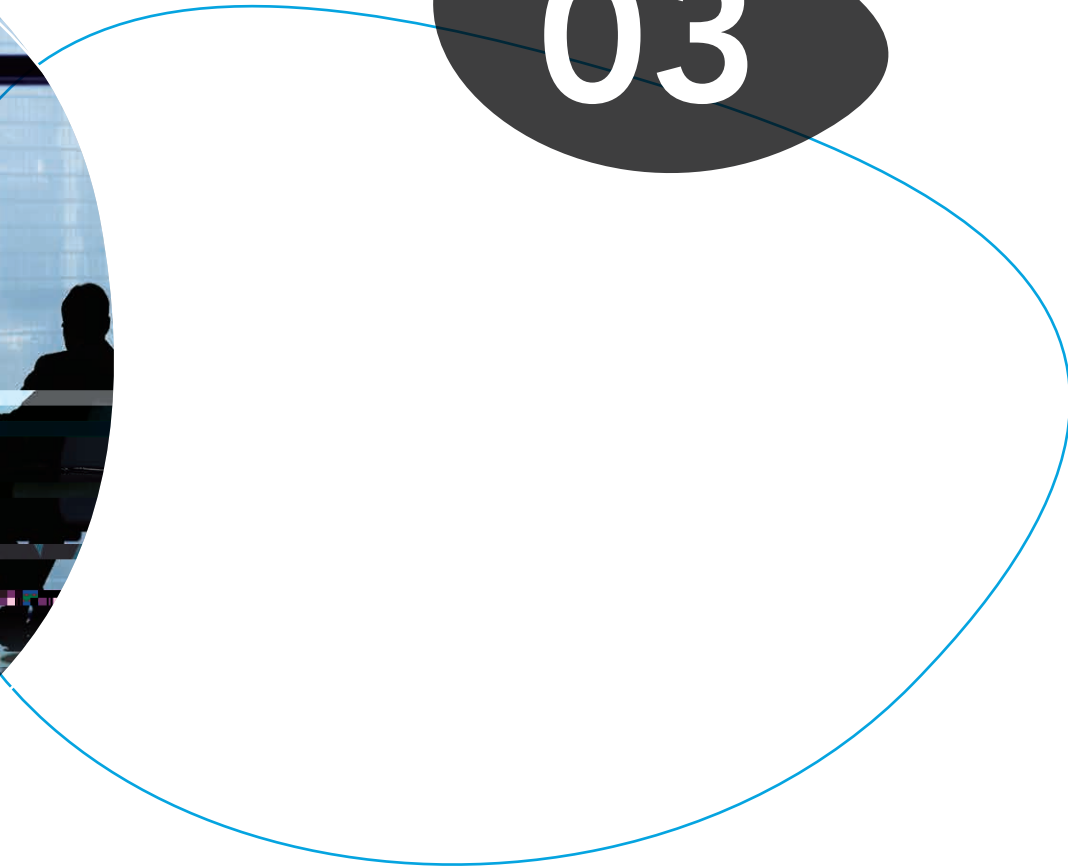


	2014	2013
	15,873,001,002.01	14,272,346,742.83
	13,804,620,593.43	12,570,727,506.56
	18,268,037.56	12,222,217.55
	279,292,658.94	217,944,096.29
	1,036,451,435.78	855,429,773.38
	(15,002,997.72)	14,528,162.46
	1,159,276.38	13,233,134.53
( )	(2,071,959.27)	(167,259.38)
( )	52,749,613.01	28,436,325.23
	798,889,651.38	616,530,917.91
	12,277,808.09	14,641,185.83
	811,167,459.47	631,172,103.74
	701,393,987.26	564,213,068.19



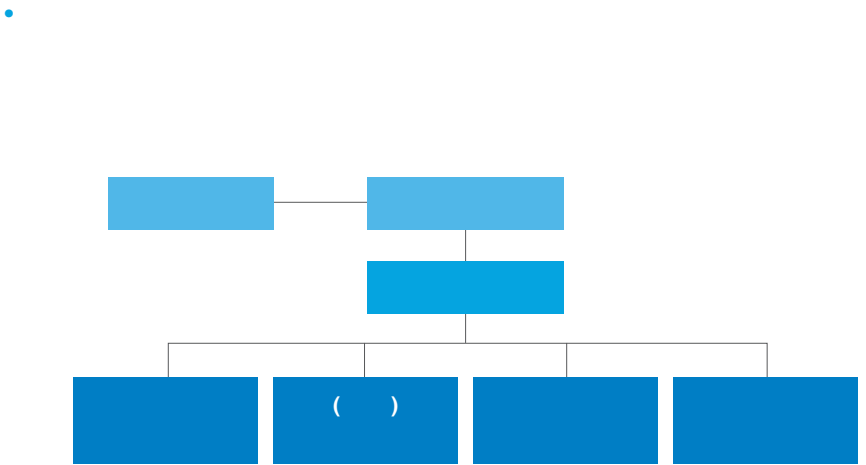
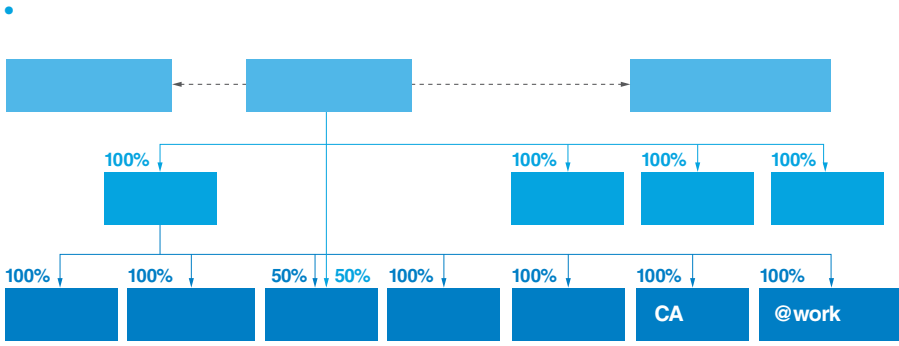
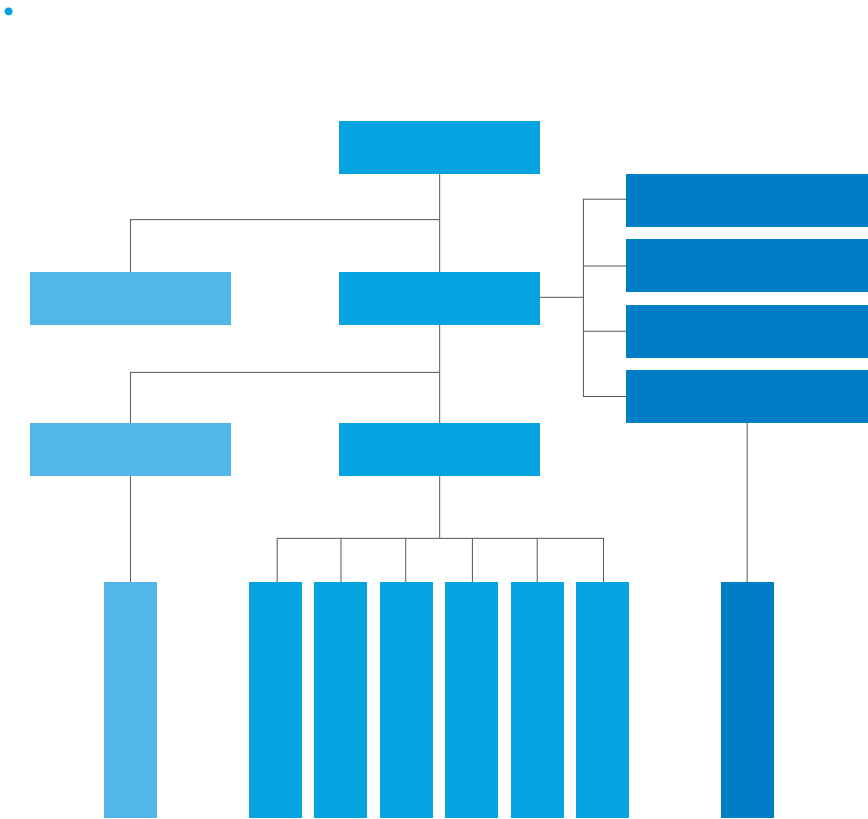


03





03







2014

/

▶ - EICC

-

-

▶

-

▶ /

-

▶

-

-

日常

▶

▶

▶

▶ ▶	▶ - ( ) ▶	
▶ / ▶ /	▶ - (EICC) ▶ / ▶ / ▶ / ▶	▶
▶ (AR) ▶ ▶	▶ ▶ ▶	▶

Yes

Partial

No







04

2015



ESH

- ▶
- ▶
- ▶
- ▶
- ▶

ISO 14001 OHSAS 18001 ISO 50001

•

- (Design for Environment)
- (Green Product Management System)
- (Environmental Hazardous Substances)
- (Hazardous Substance Process Management, HSPM System Audit)
- 

- 
- 
- ( )
- 
- 

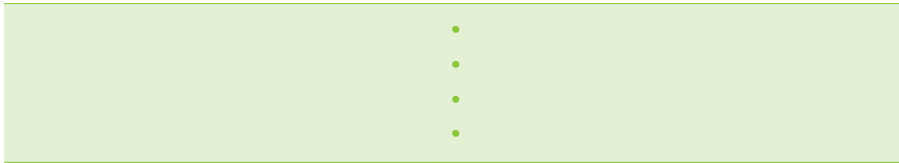
- 

-



e-learning

( )

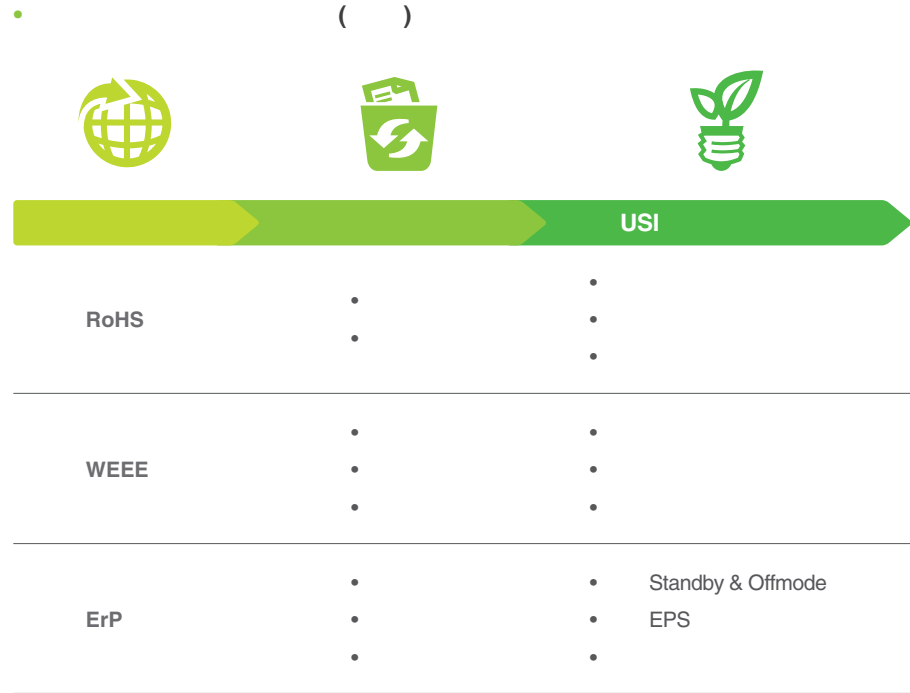
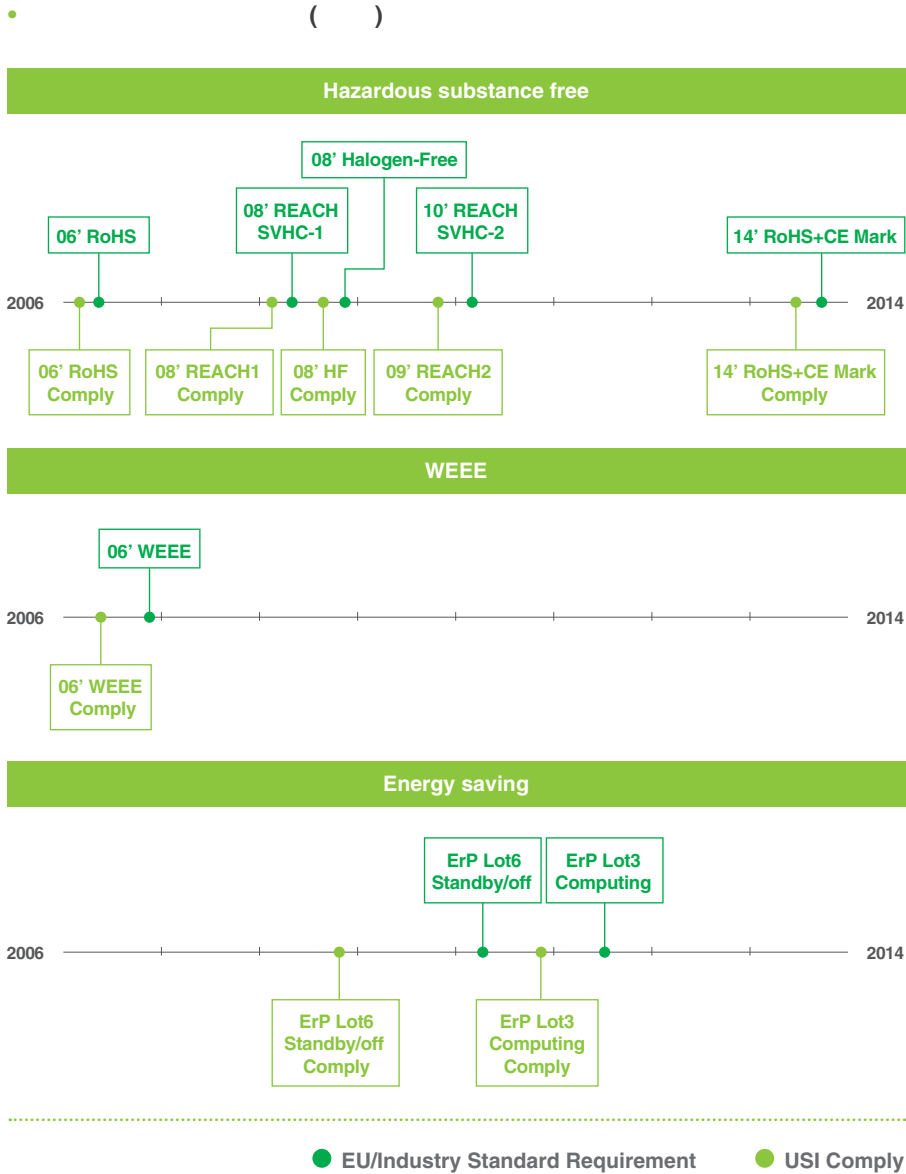


- 
- 
- 

- 
- 
- 
- 

- RoHS and RoHS 2.0
- China & Japan RoHS
- Halogen-Free
- REACH
- USA\_CEC
- The relevant regulations of Battery
- WEEE directive
- ErP
- USA\_Energy Star
- Eco-label & EPEAT
- Carbon Footprint

- ▶ RoHS (Restriction of Hazardous Substances) (Pb)  
(Cd) (Hg) (Cr<sub>6+</sub>) (PBBs) (PBDEs) 6  
RoHS 2.0 DEHP BBP DBP DIBP
- ▶ REACH (Registration, Evaluation and Authorization of Chemicals)  
SVHC (Substances of Very High Concern) 17  
225
- ▶ China RoHS Japan RoHS RoHS
- ▶
- ▶
- ▶ WEEE (Waste Electrical and Electronic Equipment)
- ▶ ErP (Energy-related Product) CEC (California Energy Commission)



(GPMS) (EHS) ( )  
DfE (Design for Environment)

• GPMS EHS ( )

• ISO14001 IECQ QC080000 ISO14064-1

•

ISO 14001	2005	2001	2012	1998	2006
IECQ QC080000	2007	2007	2012	2006	2007
ISO 14064-1	2010	2010	2011	2010	



2011  
Management System)

GPMS (Green Product

Energy Star Eco-Design Energy-related Product (ErP)

2014

:



<b>Rukai Wireless AP</b>	•	•	RoHS		
	•	•	200x200mm/1200g	Rukai	170x170mm/850g
	•	•		1.9	

<b>The Smallest 2.4G Print Antenna Wifi module</b>	•	•	HF and RoHS	antenna	PCB
	•	-	HF and RoHS		
	•	-	chip antenna or metal antenna		
		-	2.4G print antenna Wifi module		

/



<b>part</b>	-System	•	•	SAR
-------------	---------	---	---	-----

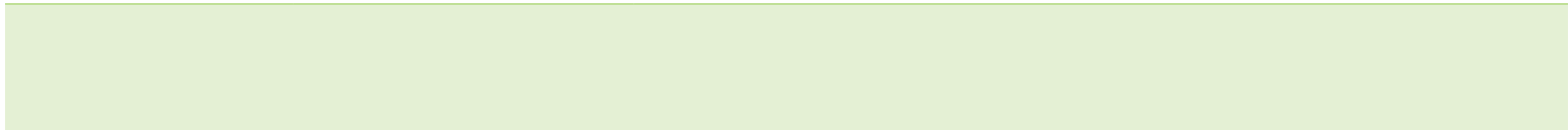
<b>3C</b>	-	•	•	RoHS	WEEE	ErP
-----------	---	---	---	------	------	-----

- 
- RoHS & 3R spec
- Mechanical parts meet the RoHS & 3R spec

<b>PDA- external AC Adapter</b>		•				
		•	no load			
						<ul style="list-style-type: none"> <li>• Energy Star level-V Level-VI</li> <li>- Efficiency &gt; 87% ---&gt; 88%</li> <li>- No load power consumption &lt; 0.3W ---&gt; 0.1W</li> </ul>

<b>POS, Desktop-internal ATX PSU multi outputs</b>		•	20, 50, 100%			
						<ul style="list-style-type: none"> <li>• 80 Plus</li> <li>- Efficiency &gt; 85% ---&gt; 87%@20% rated load</li> <li>88% ---&gt; 90%@50% rated load</li> </ul>

<b>Server, Storage-redundant single output</b>		•	20, 50, 100%			
						<ul style="list-style-type: none"> <li>• 81 Plus</li> <li>- Efficiency &gt; 88%</li> </ul>





(Wearable Device)

- 
- 
- 
- RoHS
- low energy Bluetooth
- 

- 
- RoHS and 3R spec.
- Patent Proposal :
  - 
  - 
  - LCD/Touch panel
  - 
  -
- 2.4GHz
- Mechanical parts meet the RoHS and 3R spec.

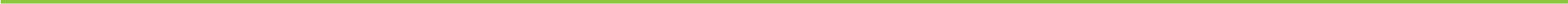
-Adapter

- 
- no load
- Energy Star level-V Level-VI
- Efficiency > 87% ---> 88%
- No load power consumption < 0.3W ---> 0.1W

- 
- 
- 
- PVC
- 
- 
- UL VZQC2
- PVC 1000 ppm

NS

- 2006 RoHS NS 2002 2012 RoHS 2.0
- 2012 WEEE
- 2012 EU ErP lot 3/6/7 Standby Mode 12W
- ErP lot 26 Tier 1







<b>SSD</b>	<ul style="list-style-type: none"> <li>• 20nm NAND</li> <li>• (DC)</li> <li>• Device Sleep</li> </ul>	<ul style="list-style-type: none"> <li>• NAND</li> <li>• DC/DC 85%</li> <li>• SATA DevSlp SSD</li> </ul>	<ul style="list-style-type: none"> <li>• SSD 500mw</li> <li>• 2mw</li> </ul>
	<ul style="list-style-type: none"> <li>• DC/DC 93%</li> <li>• PSU( Gold 90%, Platinum 92%, Titanium 93%)</li> <li>• Cable, Chassis and components RoHS</li> <li>• Chassis</li> </ul>		
<b>Server system</b>			
		(2014 )	(2013 ) 7.35%

			USD
		<b>2014</b>	
	2014	89,629	
		398,651	
		142,610	
2014		730,602	
1.36		<b>Total</b>	1,361,492



æ0 ¶

ISO14064-1

2007

2010

	( CO <sub>2</sub> e / )				
2010	1,194	217	1,087	0	88,208
2011	3,249	258	1,129	0	94,140
2012	3,935	284	1,153	0	100,379
2013	3,216	298	1,165	0	99,888
2014	3,456	313	1,193	0	106,920

(19%)

(2010 )

2014

0.6

2014

4

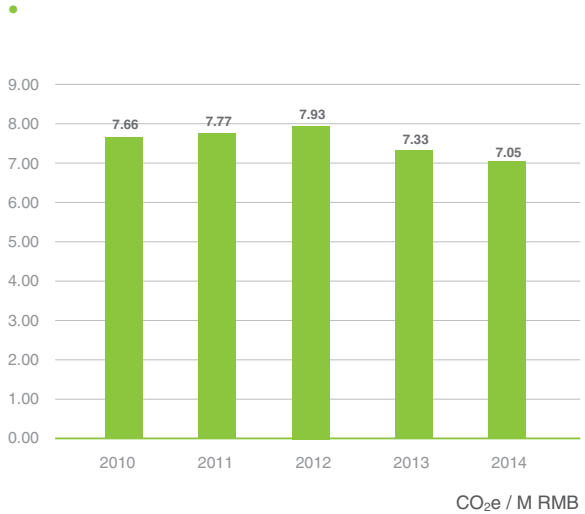
21,176

CO<sub>2</sub>e-

CO<sub>2</sub>e-(-8.7 %)

2010 2014

	( CO <sub>2</sub> e / )		
	1	2	Total
2010	2,498	88,208	90,706
2011	4,636	94,140	98,776
2012	5,372	100,379	105,751
2013	4,405	104,508	108,913
2014	4,962	106,920	111,882



- 1. 4 5
- 2. GWP IPCC AR4(2007)
- 3. 2010 2011
- 4. 3% 5%
- 5. CO<sub>2</sub> CH<sub>4</sub> N<sub>2</sub>O HFC SF<sub>6</sub>
- 6. -
- 

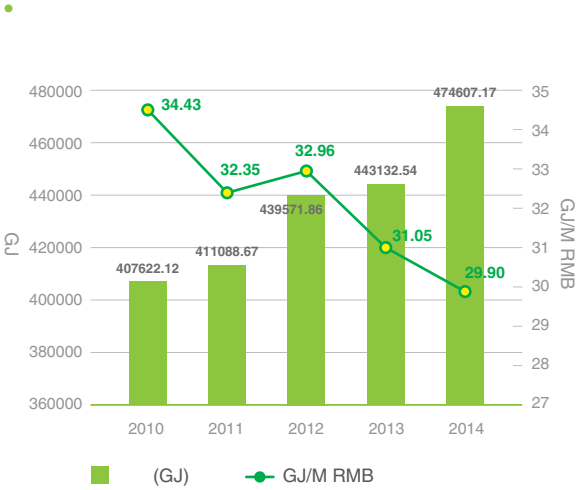
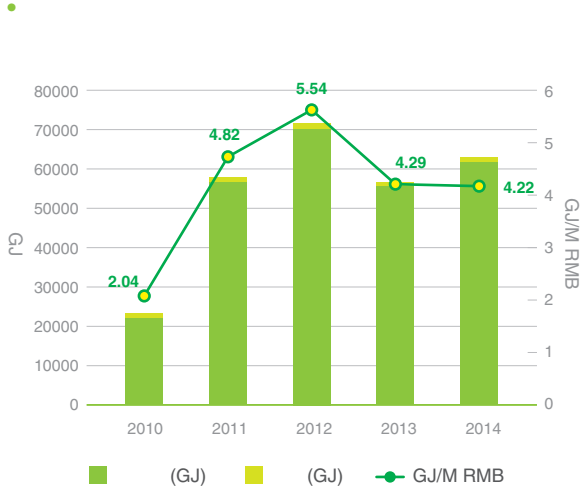
	(GJ)			(GJ)
2010	711	2,223	21,198	407,622
2011	941	2,560	57,750	411,089
2012	1,251	2,786	69,856	439,572
2013	897	3,188	57,151	443,132
2014	983	4,714	61,299	474,607

- 1. ISO14064-1
- 2. 4 5
- 3. 2010 3 2011
- 4. -
- 2013 -
- (2012) 151 -



2014 541,603 GJ 2013 504,368 GJ 37,165 GJ ( 7%)

2014 2013 1.22 GJ ( 3.58%)



• 2014

/	
	1,066 MW-hr (3,838 GJ)
	979 CO <sub>2</sub> e
LED	48 MW-hr (173 GJ)
	44 CO <sub>2</sub> e
	357 MW-hr (1,286 GJ)
	187 CO <sub>2</sub> e
	29 MW-hr (104 GJ)
	15 CO <sub>2</sub> e

1.	=	
2.	=	
3.		
-		0.9183 CO <sub>2</sub> e/MW-hr
-		102
	0.522	CO <sub>2</sub> e/MW-hr



7.2%

PC

2013 2014 2015

88% 84%

5.91% 21.33%

2014 2015

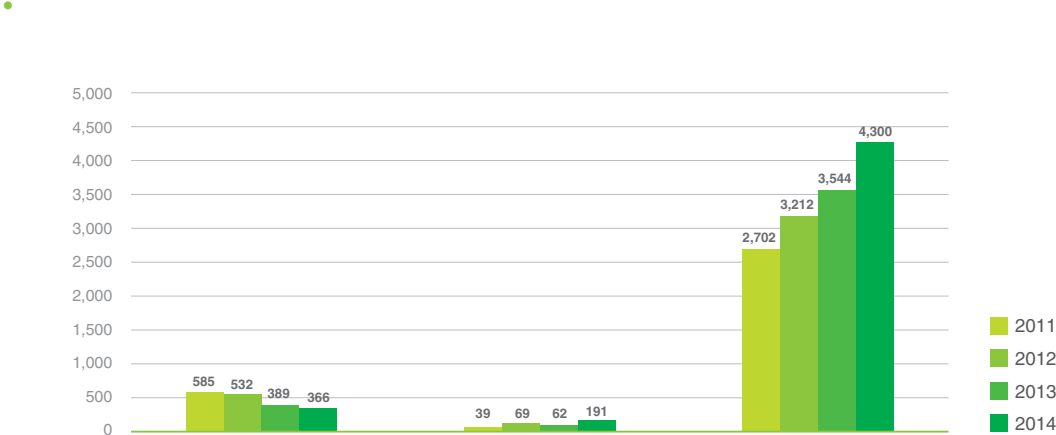
788,340 (542,652)

45.28%

2014 2.93 m<sup>3</sup>/person

( -2%)

( 23,369 59,353 )



7 SAW 2014 1.

12,557 976 2.

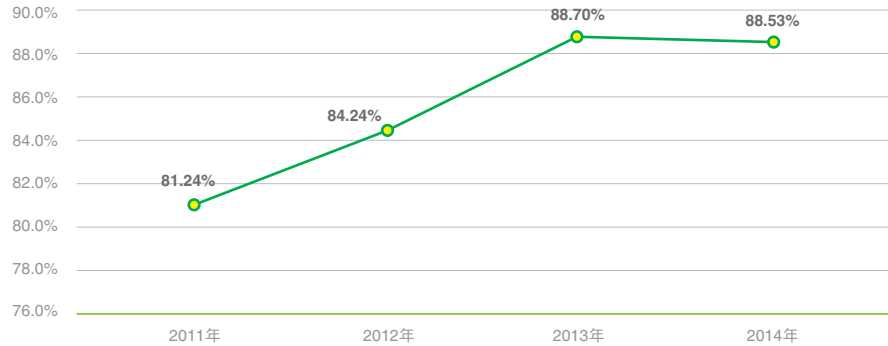
PC /



			Total
	0.56	X	0.56
	159.94	332.14	492.08
Total	160.56	332.14	492.64

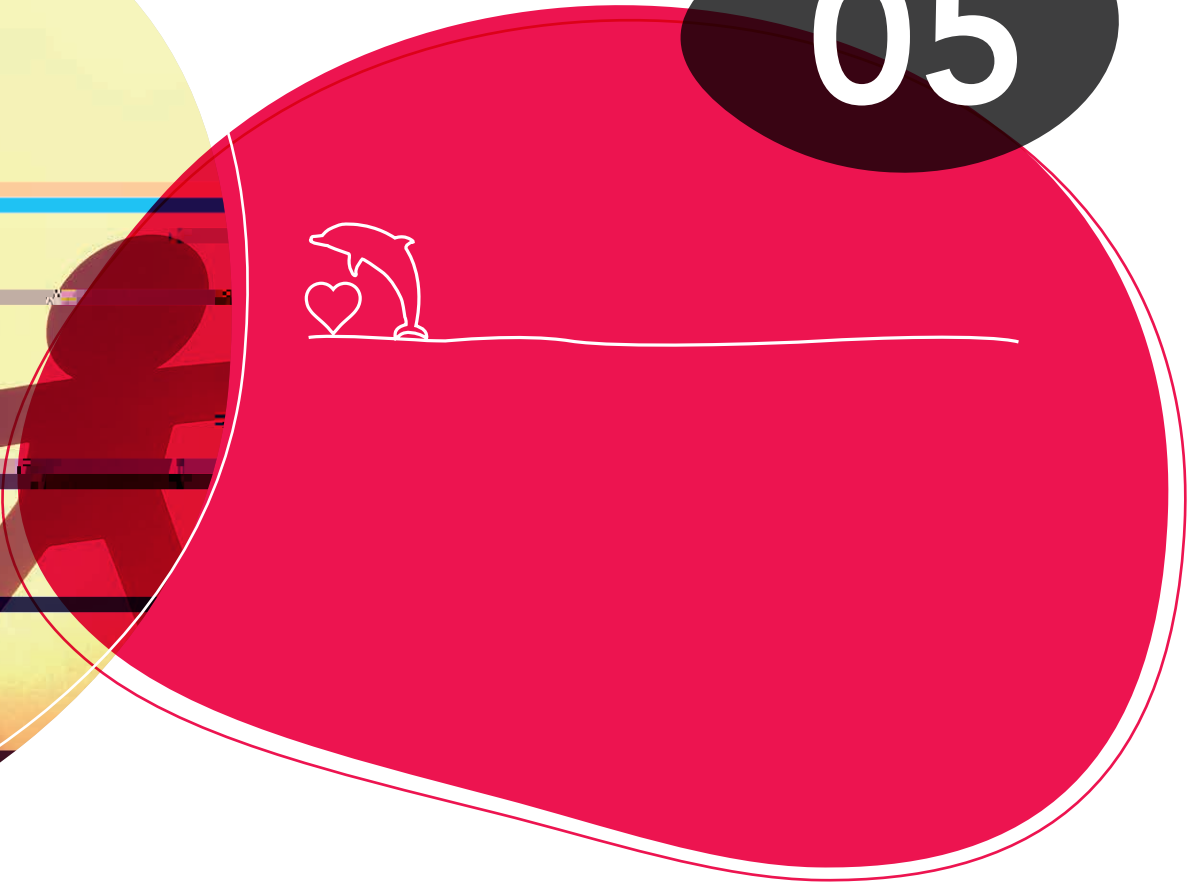
1. /
2. PCB IC TRAY

•





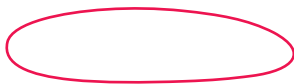
05



05

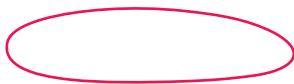


S

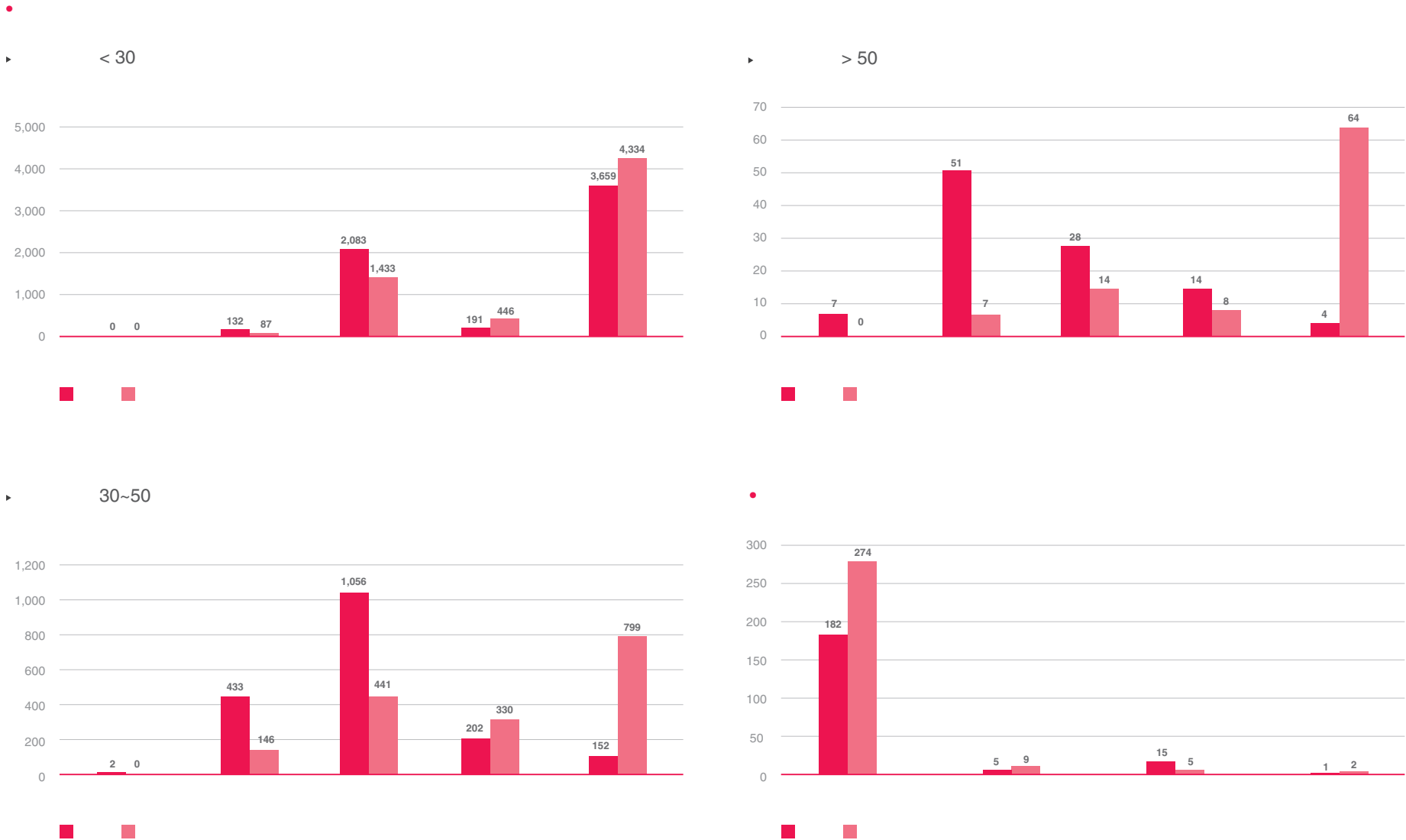
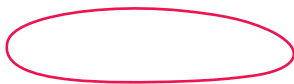


	2013		2014		2015		2016		2017		2018		2019	
	Count	%	Count	%	Count	%	Count	%	Count	%	Count	%	Count	%
	1,846	37%	1,895	63%	1,553	41%	779	41%	966	61%	127	16%	7,166	44%
	56	1%	15	0%	13	0%	18	1%	3	0%	1	0%	106	1%
	1,902	38%	1,910	63%	1,566	41%	797	42%	969	61%	128	16%	7,272	45%
	499	10%	0	0%	1	0%	181	9%	1	0%	53	7%	735	5%
	2,401	48%	1,910	63%	1,567	41%	978	51%	970	61%	181	22%	8,007	50%
	2,011	41%	1,098	36%	2,255	59%	653	34%	555	35%	222	27%	6,794	42%
	12	0%	3	0%	1	0%	3	0%	0	0%	0	0%	19	0%
	2,023	41%	1,101	37%	2,256	59%	656	34%	555	35%	222	27%	6,813	42%
	531	11%	0	0%	3	0%	286	15%	66	4%	410	50%	1,296	8%
	2,554	52%	1,101	37%	2,259	59%	942	49%	621	39%	632	78%	8,109	50%
	<b>4,955</b>	<b>100%</b>	<b>3,011</b>	<b>100%</b>	<b>3,826</b>	<b>100%</b>	<b>1,920</b>	<b>100%</b>	<b>1,591</b>	<b>100%</b>	<b>813</b>	<b>100%</b>	<b>16,116</b>	<b>100%</b>

20      22      42



		177	4%	67	2%	116	3%	84	4%	153	10%	21	3%	618	4%
		938	19%	626	21%	543	14%	303	16%	683	43%	74	9%	3,167	20%
		80	2%	32	1%	108	3%	56	3%	102	6%	29	4%	407	3%
		1,206	24%	1,185	39%	800	21%	535	28%	32	2%	57	7%	3,815	24%
		2,401	48%	1,910	63%	1,567	41%	978	51%	970	61%	181	22%	8,007	50%
		87	2%	13	0%	71	2%	35	2%	20	1%	14	2%	240	1%
		653	13%	301	10%	459	12%	208	11%	215	14%	52	6%	1,888	12%
		184	4%	41	1%	243	6%	97	5%	188	12%	31	4%	784	5%
		1,630	33%	746	25%	1,486	39%	602	31%	198	12%	535	66%	5,197	32%
		2,554	52%	1,101	37%	2,259	59%	942	49%	621	39%	632	78%	8,109	50%
		4,955	100%	3,011	100%	3,826	100%	1,920	100%	1,591	100%	813	100%	16,116	100%





<30	2,115	2,331	1,501	885	1,174	2,088	942	1166	61	37	65	218
30~50	130	215	135	90	71	240	29	59	100	20	11	148
>50	1	0	0	0	0	0	2	0	1	0	5	8
	<b>94%</b>	<b>100%</b>	<b>90%</b>	<b>92%</b>	<b>75%</b>	<b>97%</b>	<b>100%</b>	<b>130%</b>	<b>17%</b>	<b>9%</b>	<b>45%</b>	<b>59%</b>
	<b>97%</b>		<b>87%</b>		<b>93%</b>		<b>114%</b>		<b>14%</b>		<b>56%</b>	

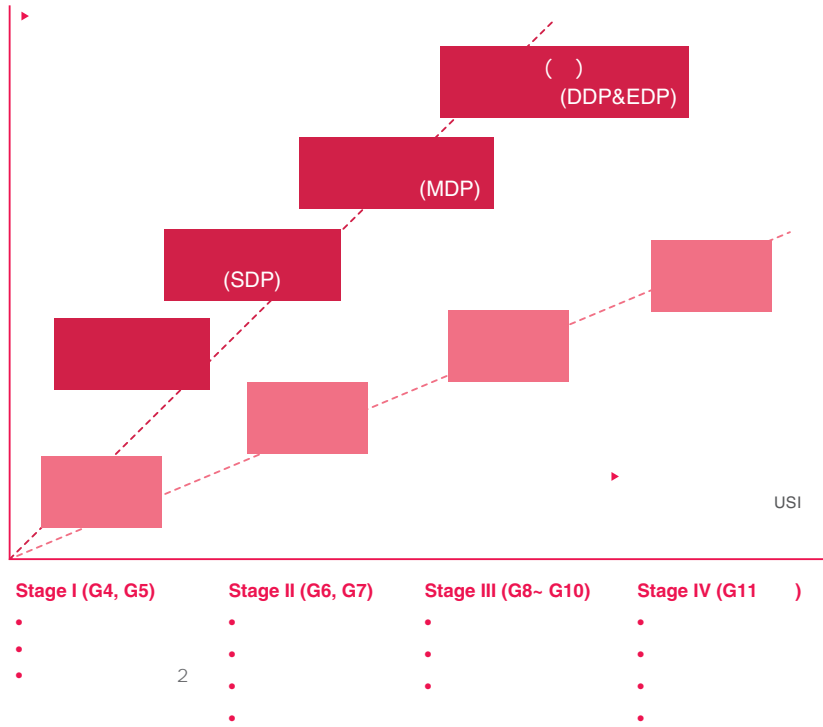


<30	1,734	2,092	539	705	1,086	2,232	844	982	27	18	54	238
30~50	155	180	55	100	78	209	37	53	36	16	12	195
>50	4	0	0	0	2	1	0	0	4	1	0	12
	<b>79%</b>	<b>89%</b>	<b>31%</b>	<b>73%</b>	<b>70%</b>	<b>102%</b>	<b>91%</b>	<b>110%</b>	<b>7%</b>	<b>6%</b>	<b>36%</b>	<b>70%</b>
	<b>84%</b>		<b>46%</b>		<b>94%</b>		<b>100%</b>		<b>6%</b>		<b>63%</b>	





USIU



USIU



USIU

- 
- ▶
- EICC( )
- ▶



▶

▶

▶

• 2014 ( )

	18.5	5.9	10.0	29.0
	17.3	1.7	15.4	39.4
▶	32.1	11.9	25.8	30.4
	40.0	6.1	5.0	33.6
	2.7	15.8	9.1	31.4
	2.0	8.9	10.7	29.0
	26.8	10.9	50.0	24.7
▶	22.4	2.6	29.3	26.3
	16.9	13.3	16.7	11.5
	35.0	6.1	11.5	8.8
	0.6	0.5	0.8	0.1
▶	0.7	0.3	0.6	0.03
	17.1	10.7	17.5	28.8
	15.2	4.7	13.6	28.8

OJT



說明

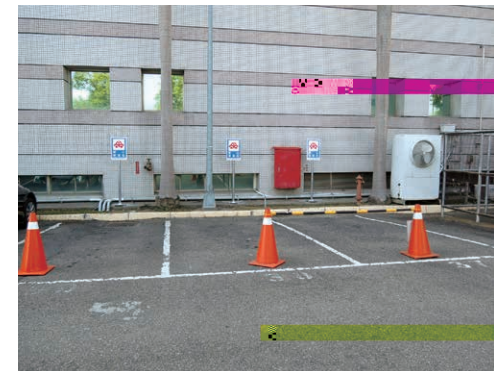
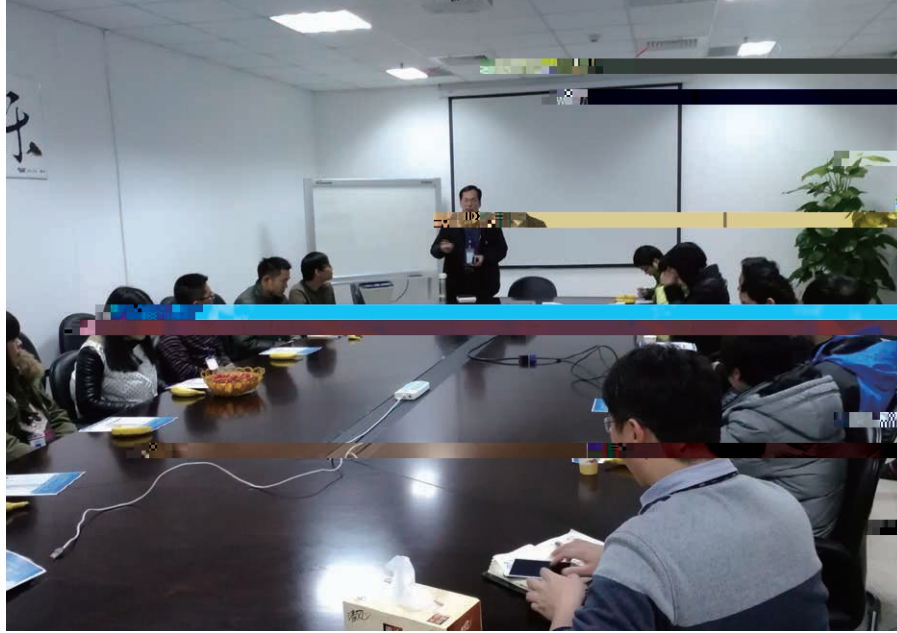


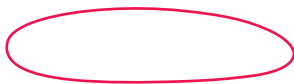
561	561	100%
1,314	1,314	100%
254	254	100%
0	0	0%
2,129	2,129	100%
226	226	100%
341	341	100%
454	454	100%
1	1	100%
1,022	1,022	100%
<b>3,151</b>	<b>3,151</b>	<b>100%</b>

1 : 1














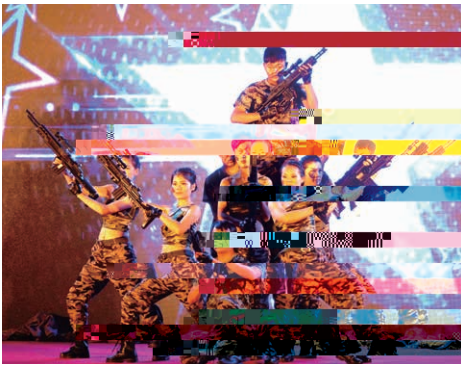
•

	 2	 2A2	
---	--	--	---

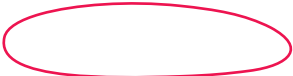
				 2
---	---	---	---	--



ZHANGJIANG



JINQIAO

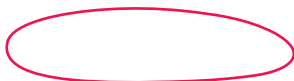


SHENZHEN



KUNSHAN



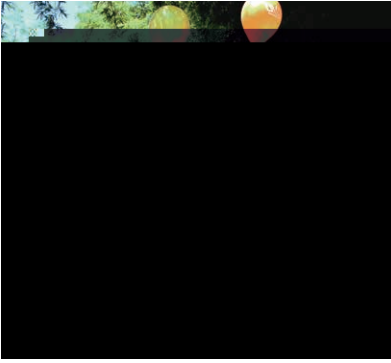


**MEXICO**





TAIWAN

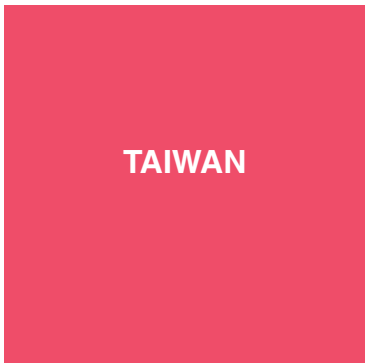


9,623 ( + )

33

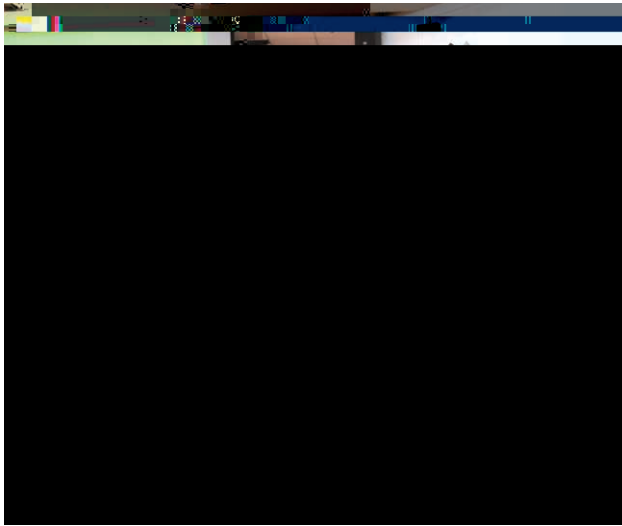
17

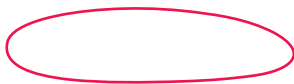
4.31(5 )





TAIWAN

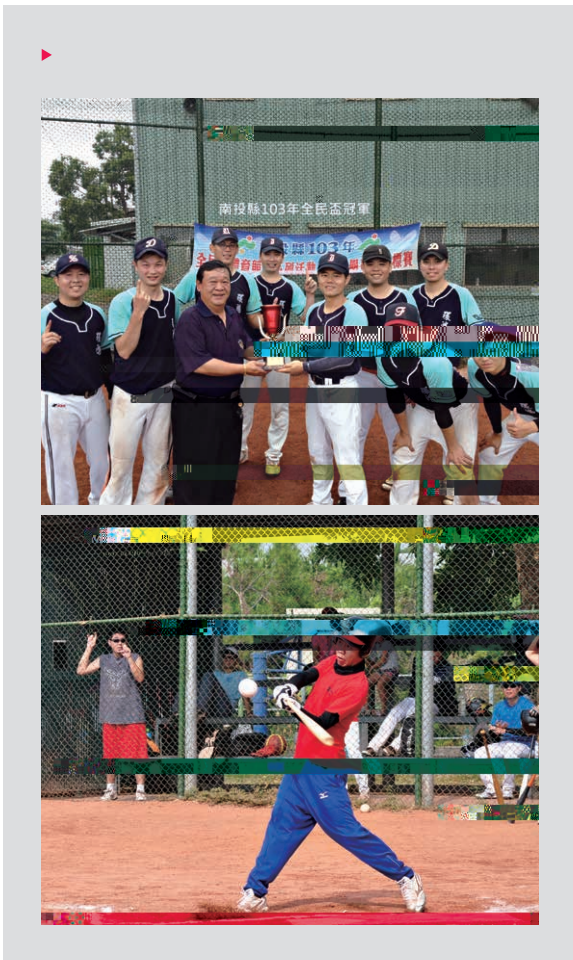
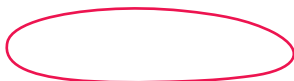


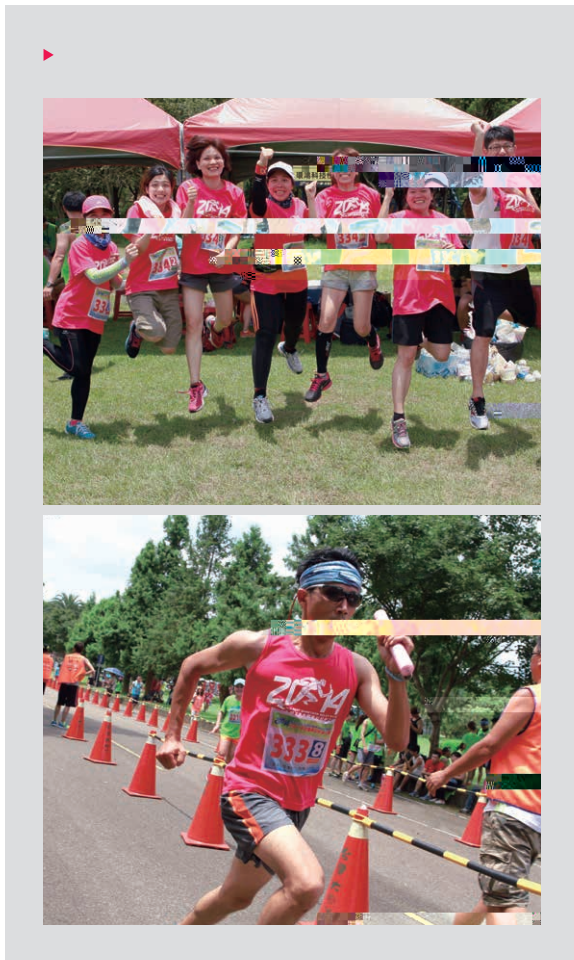
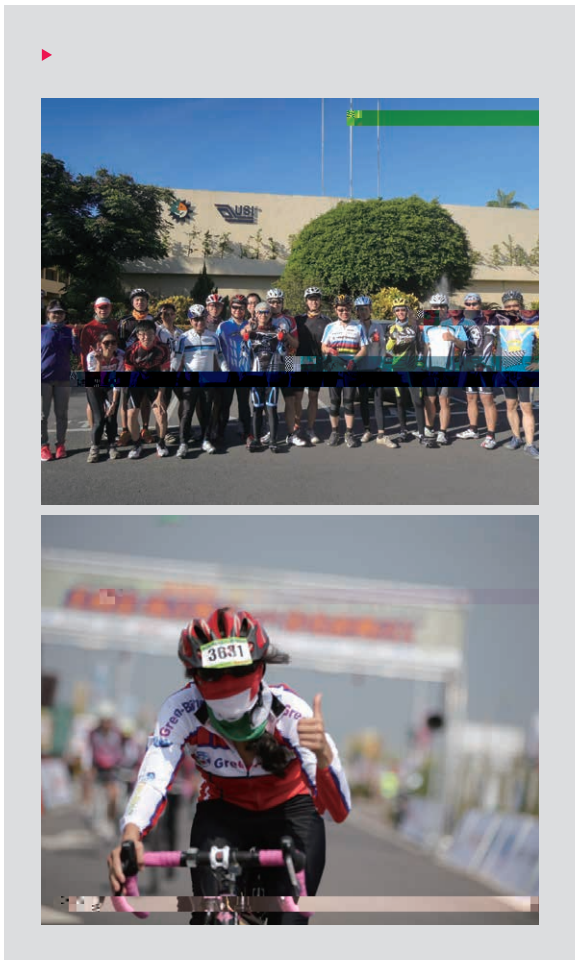
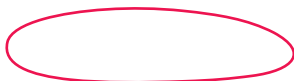


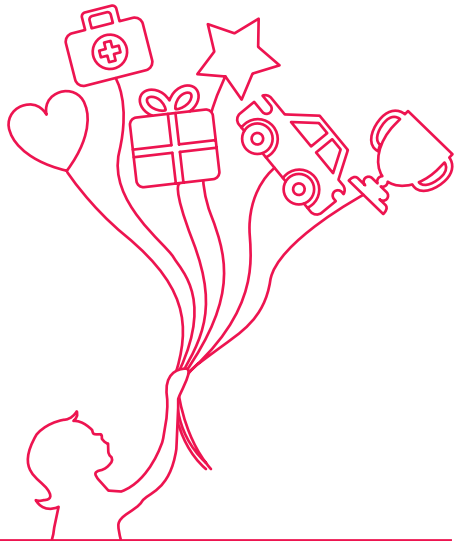
• ( )

11









•

2

100%



2014

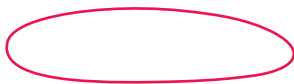
( 2014

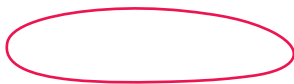
0)

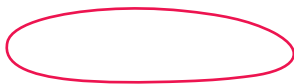
	(IR)		(ODR)		(LDR)		(AR)	
	0.08	0.00	0.00	0.00	0.16	0.00	0.18	0.59
	0.00	0.00	0.00	0.00	0.00	0.00	0.07	0.43
	0.00	0.00	0.00	0.00	0.00	0.00	0.57	0.78
	0.51	0.00	0.00	0.00	4.60	0.00	1.38	2.16
	0.00	0.13	0.00	0.00	0.00	1.99	0.02	0.03
	0.00	0.00	0.00	0.00	0.00	0.00	0.03	0.26

- 1. (IR) = ( / )×200,000
- 2. (LDR) = ( / )×200,000
- 3. (AR) = ( / )×100%

( )







( )

2014

X



15 405

2010	2014		
41.36%	32.38%		30.2%
19.53%		42.73%	24.94%

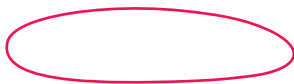
2014

2014

2013

(EAPs)





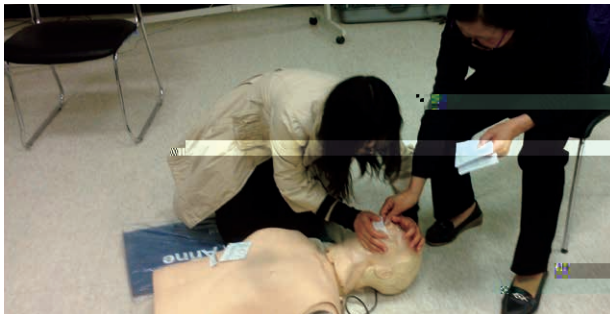
DIY  
Newsletter      Email

▶  
2014

13  
42

EAP  
411

▶  
2014

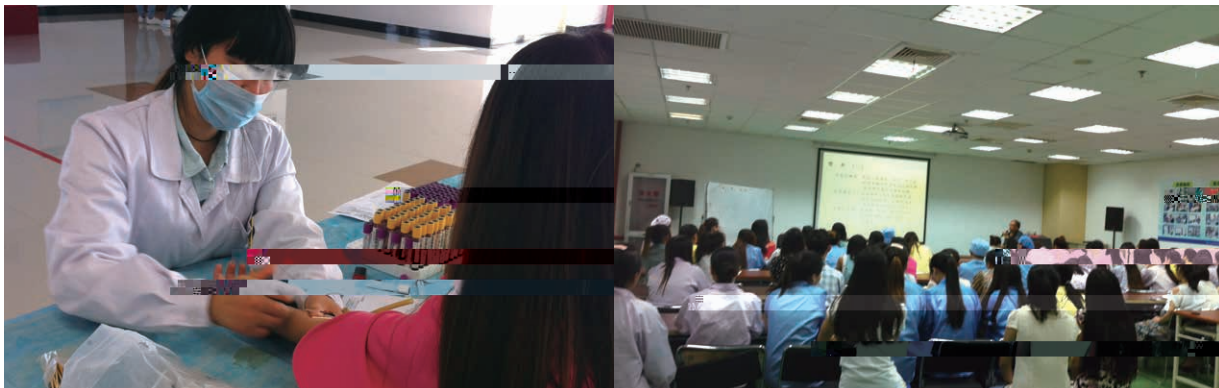




EAP Employee Assistance Program

EAP ( )







06



DMS

DMS

.



QBR(Quarterly Business Review)



•

e-RMA SAP

e-RMA

RMA

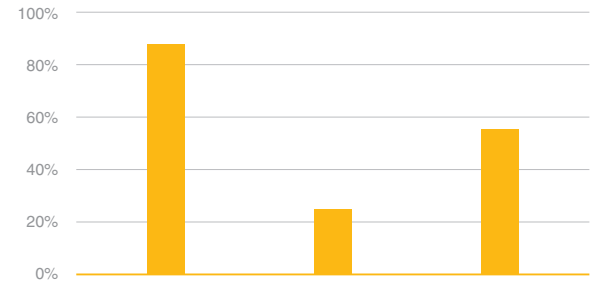
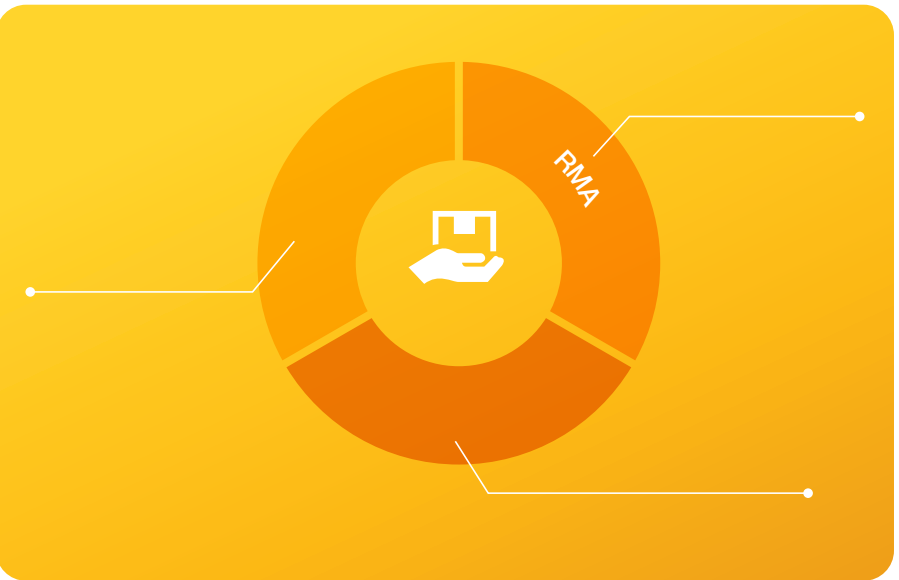
2014 USI 87%

( 57%

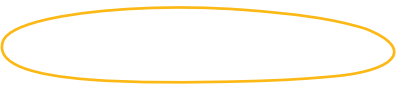
24%

)

2014



473	60	749	538	383	130
47%	1%	30%	14%	5%	4%



---

QBR (Quarterly Business Review)

2014

92.31%

QC080000

EICC

WEEE RoHS REACH

EICC

2014  
2015

5

EICC

2014

EICC

2014

3	5	5	2					0%	60%	100%	40%
4	4	5	2	SOP				0%	60%	100%	40%
5	5	5	4					0%	60%	100%	80%

2011

2012

2013 100

2014 232 (RCOI)

2013 85%

2014 95%

2014 (CMRT)

**95%**

2013	85%
2014	95%

.



(CMRT)

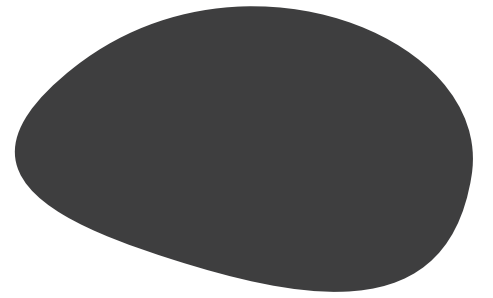
2(CMRT)

(OECD)

2014  
(CFSI)

english/minerals.asp

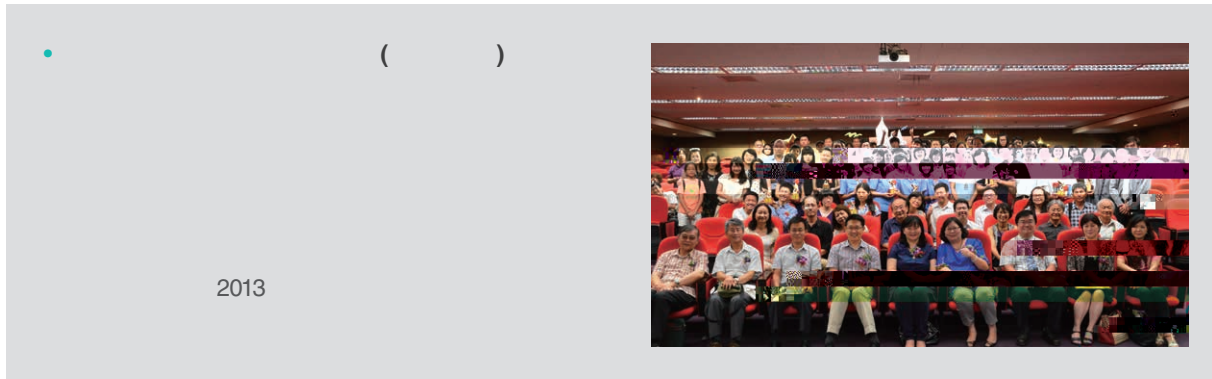
<http://www.usish.com/>





2005





2014	2013
299	6
130	90
11	-
84	106
1	-
-	11
<b>525</b>	<b>213</b>

▶ 2006

▶ 2014

▶



525 1356  
50 49 6

▶

2006 2014

▶

30



- 32
- 31
- 30
- 29
- 28
- 27
- 26
- 25
- 24



2014

36

210

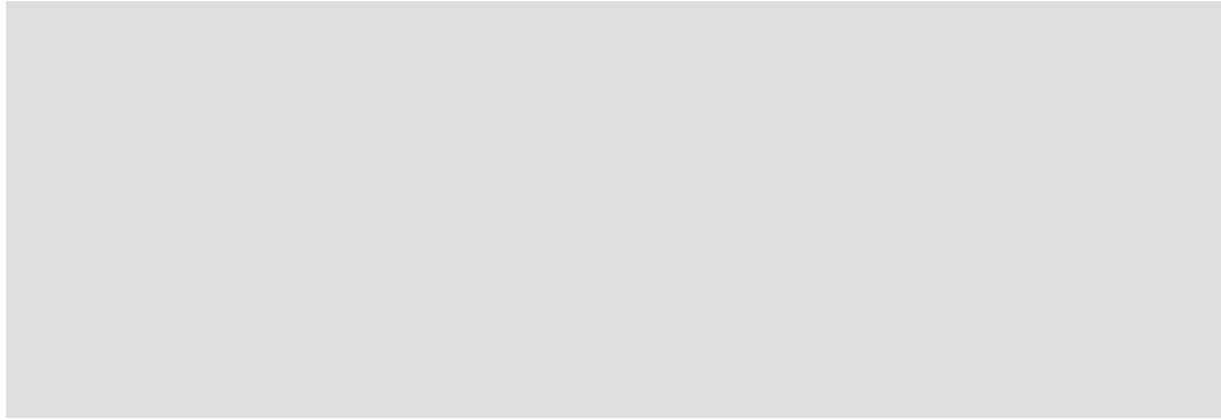


- 2014
- 2013
- 2012
- 2011
- 2010
- 2009
- 2008
- 2007
- 2006
- 2005

( )

2005

100





• 2014 ( )

25 2014



160

14

LED

17

• - ( )

2014 10 17





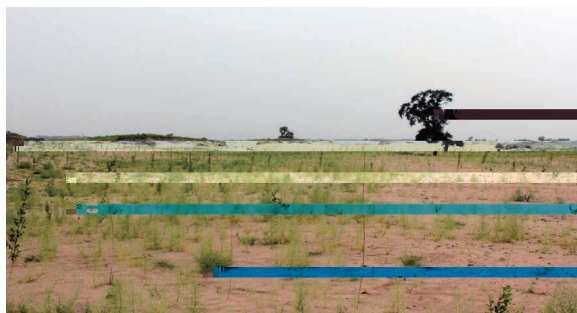




(2014.4.2)



(2014.4.28)



(2014.7.2)

- 2013
- 44.9 2.99
- 
- 1.5 \*5 89 / 1,335 /
- / 4,000 /
- GPS /

### GPS

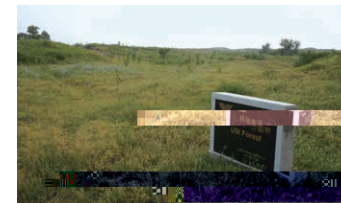
	▶ 2013-1	
2013	N43 12 38.3 E122 06 29.4	N43 12 38.1 E122 06 31.8
	N43 12 38.4 E122 06 34.0	N43 12 47.4 E122 06 35.3
	N43 12 47.6 E122 06 32.8	N43 12 47.6 E122 06 30.7



-					
			2014	7	9
	2013	12	480		
0.55%		78.75%	1.18		
1.812	0.695		2013	2014	
	2013	78.75%			
	2013				



2013 2013



2013 2014

2015



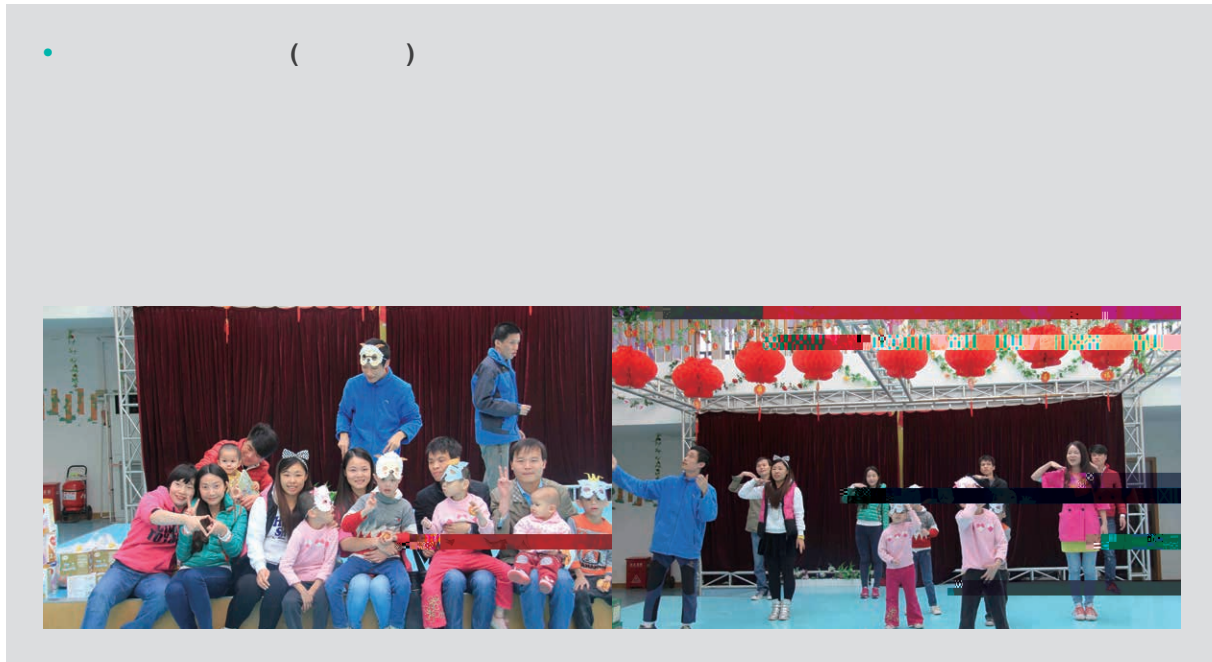

- ( )

2006

2014 21 60

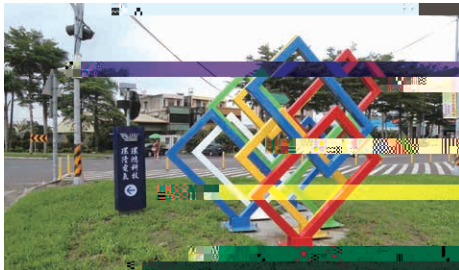
- ( )

50m





- ( )  
2007 ( ) 14 3 ( )  
/  
2013 1 4  
2014 14 3




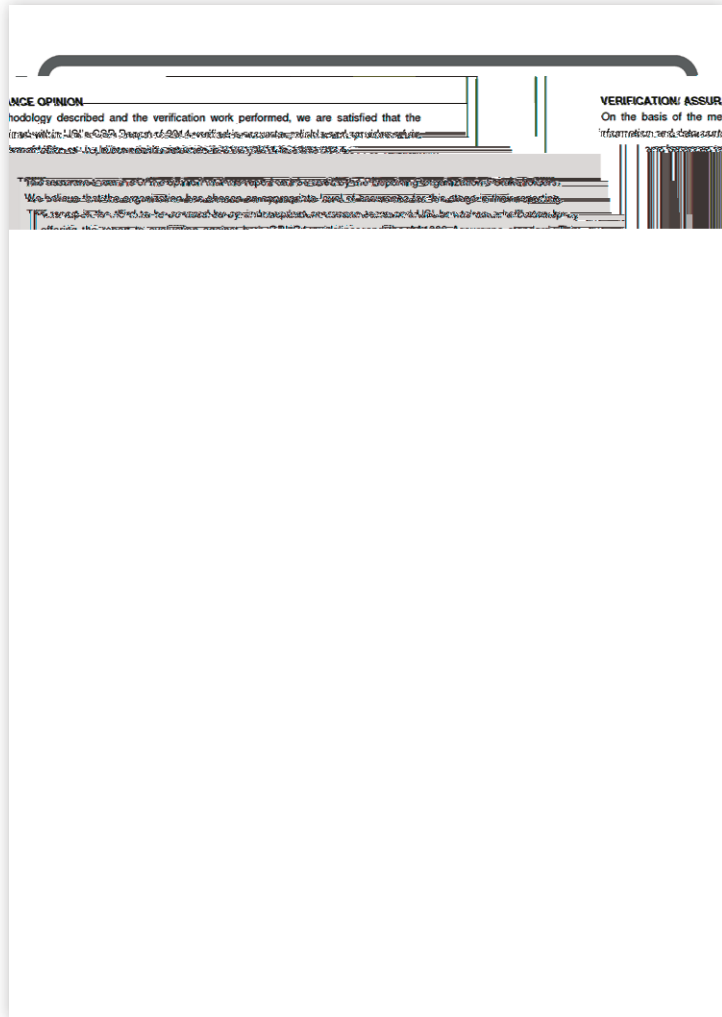
14 3



14 3

- ( )



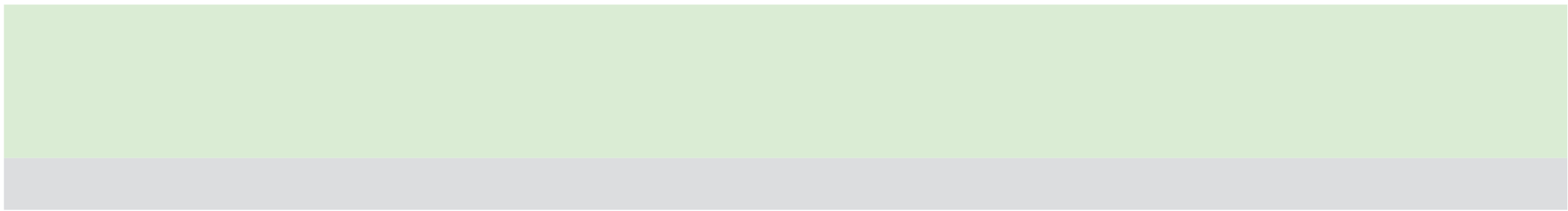
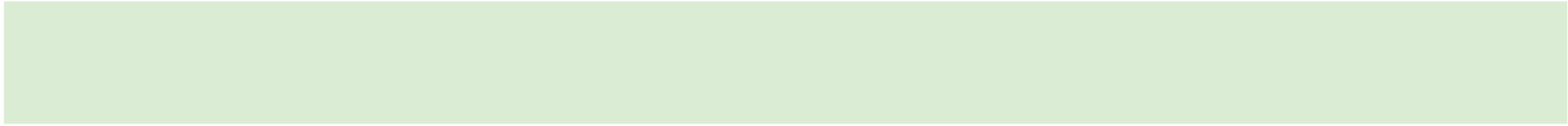


# GRI Index

G4-1		4	90
G4-3		15	90
G4-4		15	90
G4-5		15	90
G4-6		15 16	90
G4-7		15	90
G4-8		16	90
G4-9		15 7 h	90 c

G4-11			50		90
G4-12			74		90
G4-13			19	2014 4 12	90
G4-14			25		90
G4-15		EICC	12		90
G4-16			13		90
G4-17	a.		2	13	
	b.		19	6 Service Center	90
G4-18	a.		7		90
	b.				
G4-19			7		90
G4-20	• • 1. G4 -17 2. G4 -17 •	( G4 - 17)	9		90

---



---



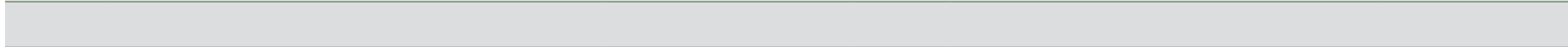
G4-29					2			90
-------	--	--	--	--	---	--	--	----

G4-30					2			90
-------	--	--	--	--	---	--	--	----

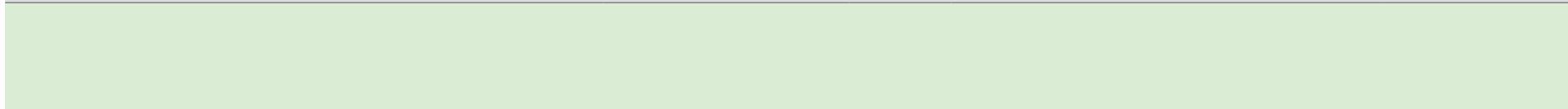
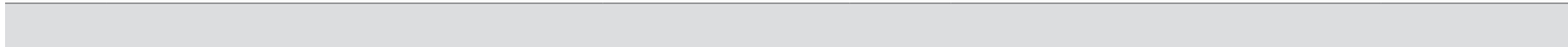
G4-31					2			90
-------	--	--	--	--	---	--	--	----

G4-32	a.							
	b.	GRI			2			90
	c.		GRI	GRI Index	91			
		GRI						

G4-33	a.							
	b.							
	c.				2			90
	d.							



G4-34								
-------	--	--	--	--	--	--	--	--



•				
		15		90
G4-EC1		16		90
G4-EC3		63		90
G4-EC4		22		90
		41		90
		49		90
G4-EC5	( )	49		90
G4-EC6	( )	41		90
		74		90
G4-EC9		74		90
		34		90
G4-EN1	( )	34	100%	90

		36	90
G4-EN3		36	90
G4-EN5		37	90
G4-EN6		37	90
G4-EN7	( )	29	90
		38	90
G4-EN8		38	90
G4-EN10		38	90
		35	90
G4-EN15	( 1)	35	90
G4-EN16	( 2)	35	90
G4-EN18		35	90
G4-EN19		35	90
		38	90
G4-EN23		39	90
G4-EN24			90

		25		90
G4-EN27	( )	25		90
		29		90
		24		90
G4-EN29			40 12,000	90
		25		90
G4-EN31		33		90
		75		90
G4-EN32	( )	75		90
( )				
G4-EN33	著	76		90
		75		90
		34		90
G4-EN34				
		75		90

	41	90
G4-LA1	45	90
G4-LA2	51	90
G4-LA3	46	90
	41	90
G4-LA4	41	90
	63	90
G4-LA6	64	90
	46	90
G4-LA9	48	90
G4-LA10	46	90
G4-LA11	49	90

		41	90
G4-LA12		42	90
		49	90
G4-LA13		50	90
		75	90
G4-LA14	( )	75	90
G4-LA15	著	76	90
		75	90
G4-LA16	2014	75	90

		41	90
G4-HR2		41	90
		47	90
		41	90
G4-HR3		41	90
	2014	41	90
G4-HR4		41	90
		75	90
		41	90
	2014	41	90
		75	90
G4-HR5		41	90
		75	90
		41	90
		75	90



		79	90
G4-SO1		79	90
		21	90
G4-SO3	EICC	12	90
	著	21	90
			( ) 2014
G4-SO4		22	90
		22	90
G4-SO8		22	90
		75	90
G4-SO9	( )	75	90
( )			
G4-SO10	著	76	90



72

90

G4-PR1

90

G4-PR2

72

90

72

90

G4-PR5

73

90

22

90

G4-PR8

2014

90

22

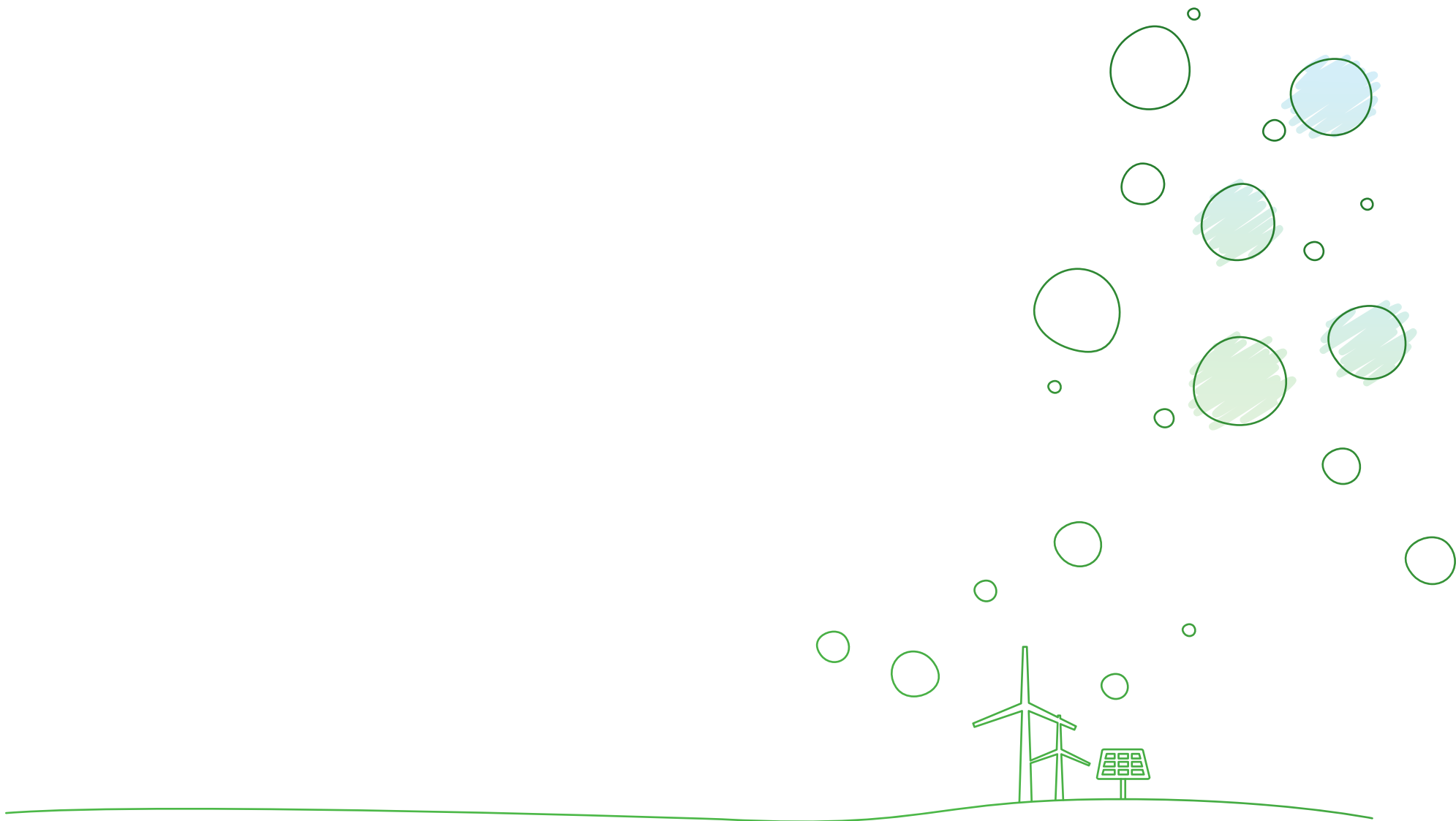
90

G4-PR9

2014

90

CSR	6	90
	75	90
	76	90
	25	90
	29	90





**2014**  
**企业社会责任报告书**  
 Corporate Social Responsibility Report

1558  
 351 141

+86-21-5896-8418  
 +886-49-235-0876

/

/

/ /

www.usish.com

/ / / / / /

/ / / / / /

/ / / / / /

/ OCHOA URIARTE MARIA GABRIELA/

/ / / /



FSC

RoHS



FUSI 旭 卷